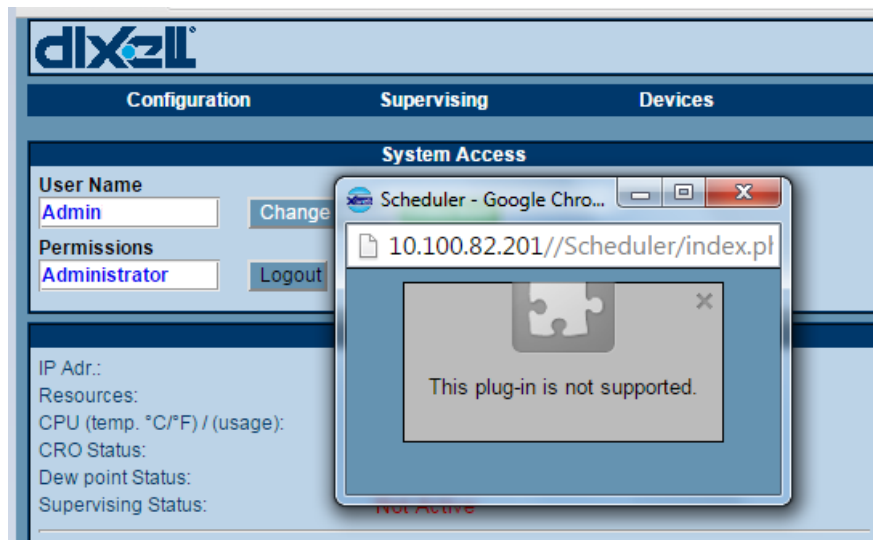


Chrome v. 42 - Java™ plug-in compatibility in XWEB models

Dear Customer,
the latest release of the Google browser, Chrome (version 42), introduces a modification concerning the Java™ plug-in management. Starting from this version a simple and fast additional configuration is required to keep using the XWEBs with Java™ plug-in.

Using Chrome (version 42) with XWEBs the following window appears:

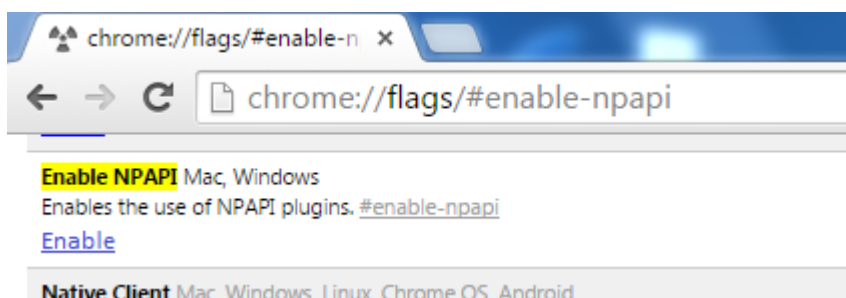


The Java™ plug-in for Web browsers relies on the cross platform plug-in architecture NPAPI, which has long been, and currently is, supported by them. Google announced the intention to remove NPAPI support from Chrome, thus effectively dropping support for many NPAPI based plugins including the Java™ plug-in.

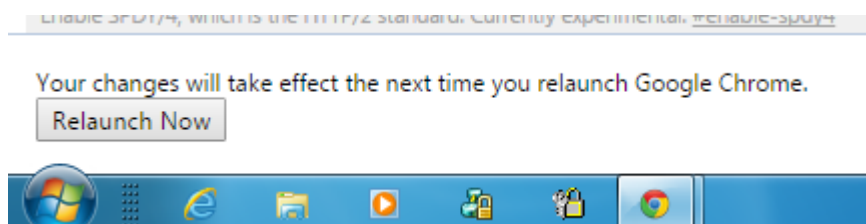
1 How to enable JAVA™ in Chrome Version 42 and higher

Starting from Chrome version 42, an additional configuration step is required to keep using the JAVA™ plug-in; please see below the procedure to follow.

1. In the URL address bar, enter: "**chrome://flags/#enable-npapi**".



2. Click the "**Enable**" link to enable the use of NPAPI plugins.



3. Click the "**Relaunch Now**" button in the bottom part of the configuration page.

2 FAQ

2.1 I'm used to use Firefox® and Internet Explorer®. How JAVA™ is affecting these browsers?

JAVA™ works correctly with these browsers; it affects only Chrome from version 42.

2.2 Which XWEBs models are affected by the Java™ plug-in?

To date, all XWEB models are requiring JAVA™ plugins for some specific functions.
The new XWEB-EVO series will be gradually freed of all Java™ plugins.

For any question don't hesitate to contact our sales and customer service specialists.